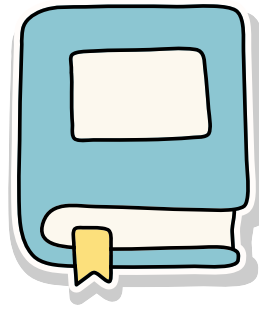


Matemática

3º-4º ano



20 problemas de conversão de unidades de comprimento (mm, cm, dm, m, km)

$0,3 \text{ km} = \underline{\quad\quad\quad} \text{ m}$

$0,006 \text{ km} = \underline{\quad\quad\quad} \text{ cm}$

$500 \text{ cm} = \underline{\quad\quad\quad} \text{ m}$

$15 \text{ dm} = \underline{\quad\quad\quad} \text{ m}$

$7,5 \text{ m} = \underline{\quad\quad\quad} \text{ mm}$

$4,8 \text{ m} = \underline{\quad\quad\quad} \text{ mm}$

$2 \text{ km} = \underline{\quad\quad\quad} \text{ cm}$

$250 \text{ cm} = \underline{\quad\quad\quad} \text{ km}$

$80 \text{ mm} = \underline{\quad\quad\quad} \text{ cm}$

$0,002 \text{ km} = \underline{\quad\quad\quad} \text{ m}$

$0,04 \text{ m} = \underline{\quad\quad\quad} \text{ mm}$

$120 \text{ cm} = \underline{\quad\quad\quad} \text{ mm}$

$1,2 \text{ km} = \underline{\quad\quad\quad} \text{ dm}$

$0,5 \text{ m} = \underline{\quad\quad\quad} \text{ dm}$

$600 \text{ m} = \underline{\quad\quad\quad} \text{ km}$

$3 \text{ km} = \underline{\quad\quad\quad} \text{ mm}$

$0,9 \text{ m} = \underline{\quad\quad\quad} \text{ cm}$

$70 \text{ dm} = \underline{\quad\quad\quad} \text{ km}$

$350 \text{ mm} = \underline{\quad\quad\quad} \text{ m}$

$0,01 \text{ m} = \underline{\quad\quad\quad} \text{ mm}$

Dica: $1 \text{ km} = 1000 \text{ m}$ $1 \text{ m} = 10 \text{ dm}$ $1 \text{ dm} = 10 \text{ cm}$ $1 \text{ cm} = 10 \text{ mm}$