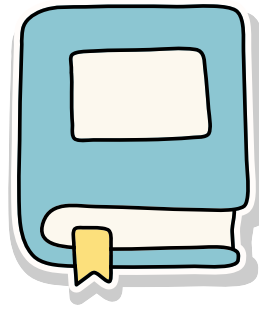


# Matemática



## 20 problemas de conversão de unidades de comprimento (mm, cm, dm, m, km)

$0,05 \text{ km} = \underline{\hspace{2cm}} \text{ m}$

$15 \text{ cm} = \underline{\hspace{2cm}} \text{ m}$

$3,5 \text{ m} = \underline{\hspace{2cm}} \text{ cm}$

$2,5 \text{ km} = \underline{\hspace{2cm}} \text{ cm}$

$2,8 \text{ km} = \underline{\hspace{2cm}} \text{ mm}$

$300 \text{ mm} = \underline{\hspace{2cm}} \text{ cm}$

$450 \text{ cm} = \underline{\hspace{2cm}} \text{ m}$

$0,09 \text{ km} = \underline{\hspace{2cm}} \text{ m}$

$7,2 \text{ m} = \underline{\hspace{2cm}} \text{ mm}$

$50 \text{ dm} = \underline{\hspace{2cm}} \text{ m}$

$0,003 \text{ km} = \underline{\hspace{2cm}} \text{ cm}$

$0,75 \text{ m} = \underline{\hspace{2cm}} \text{ cm}$

$120 \text{ mm} = \underline{\hspace{2cm}} \text{ m}$

$1,2 \text{ km} = \underline{\hspace{2cm}} \text{ mm}$

$6,5 \text{ km} = \underline{\hspace{2cm}} \text{ dm}$

$250 \text{ cm} = \underline{\hspace{2cm}} \text{ km}$

$800 \text{ m} = \underline{\hspace{2cm}} \text{ km}$

$0,008 \text{ m} = \underline{\hspace{2cm}} \text{ mm}$

$0,45 \text{ m} = \underline{\hspace{2cm}} \text{ mm}$

$75 \text{ dm} = \underline{\hspace{2cm}} \text{ km}$

Dica:  $1 \text{ km} = 1000 \text{ m}$   $1 \text{ m} = 10 \text{ dm}$   $1 \text{ dm} = 10 \text{ cm}$   $1 \text{ cm} = 10 \text{ mm}$